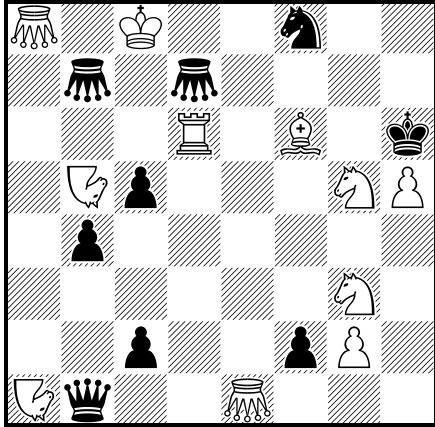


FAIRY SOLVING ECSC 2024 HAGEN

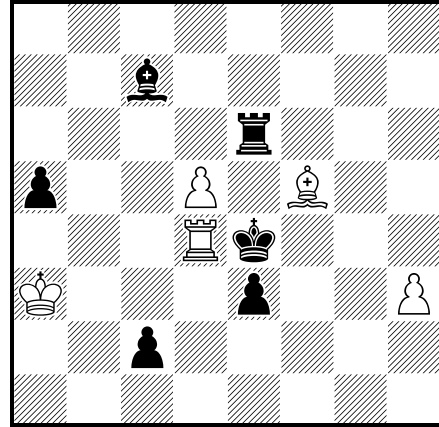
1



#2 (11+9) C+

♞♞ = nightrider
♛♛ = grasshopper

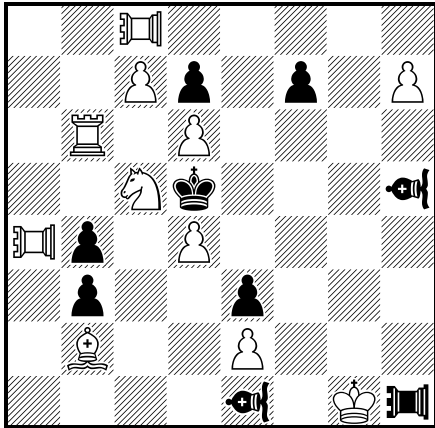
4



h#2 (5+6) C+

Patrol chess
b) ♖d5→c4
c) ♖d5→f2
d) ♖d5→f6

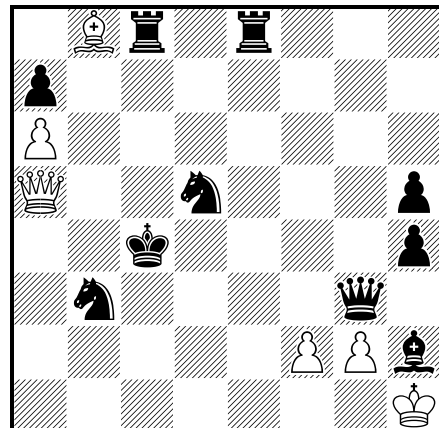
2



#3 (11+9) C+

♞♞ = vao, ♞♞ = pao

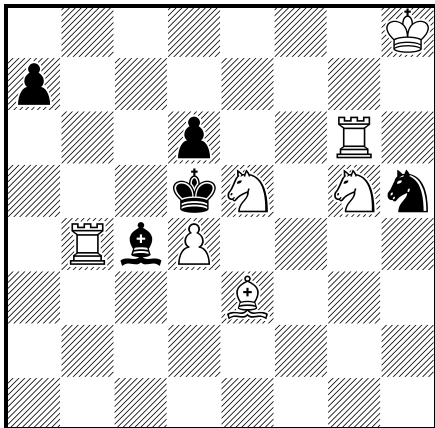
5



h#3 (6+10) C+

Madrasī
2.1.1.1.1.1

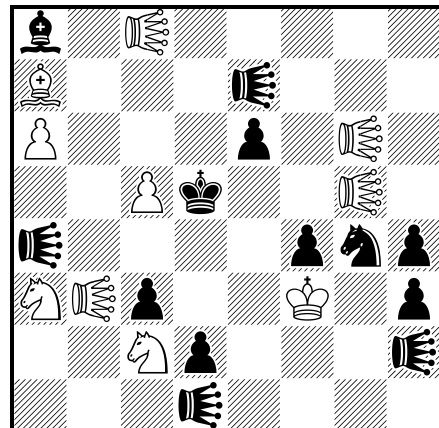
3



#5 (7+5) C+

Circe

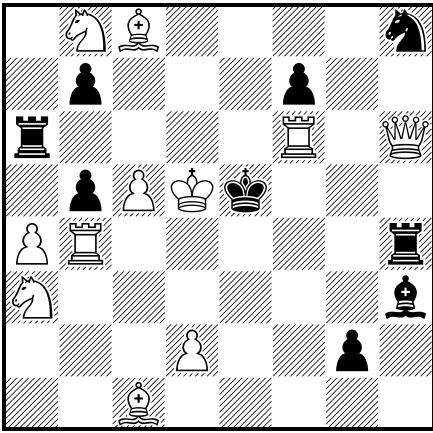
6



s#2 (10+13) C+

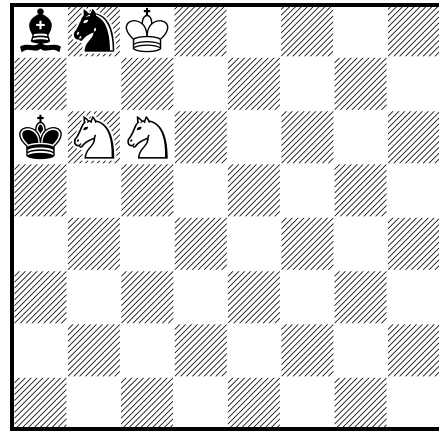
♞♞ = locust

7



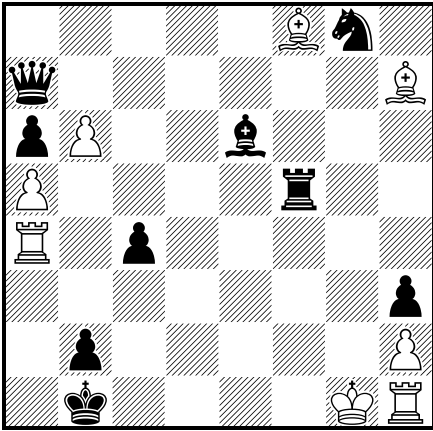
s#3 (11+9) C+
Madrasi RI

10



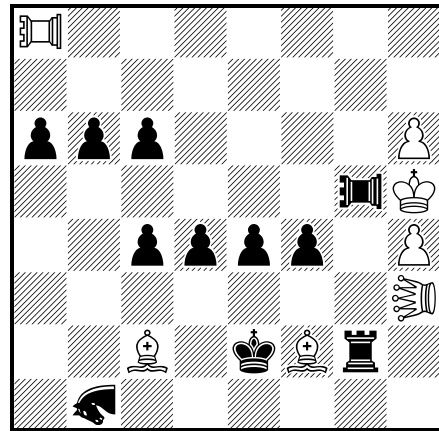
hs#3 (3+3) C+
PWC
b) ♖a8

8



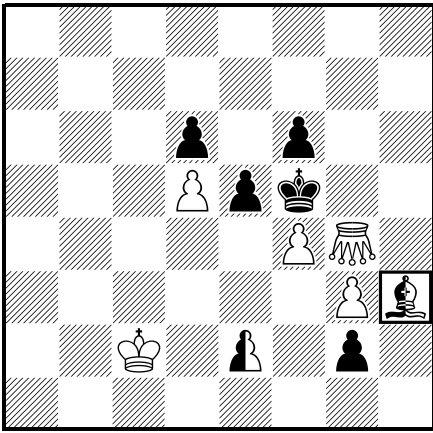
r#2 (8+9) C+

11



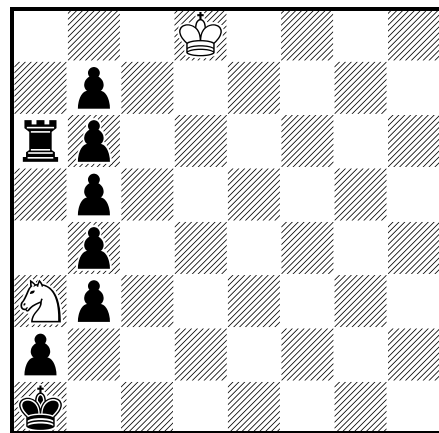
hs#4 (7+11) C+
♞ = nao, ♝ = leo, ♖♜ = pao
3.1.1.1.1.1.1.1

9



ser-h#5 (5+5+2) C+
♞ = chameleon
♝ = grasshopper
2.1.1.1.1.1

12



ser-h=17 (2+8) C+